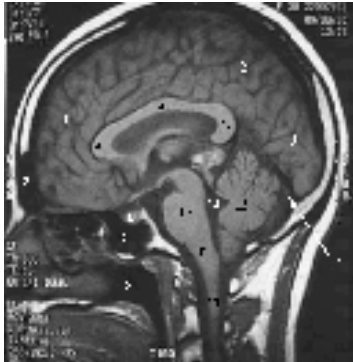


Neuroradiology Department

Information for patients—The Magnetic Resonance Scanner



MR Scan of the brain



3T MR Scanner

About the Magnetic Resonance Scanner

M.R. scanning is a relatively new technique, and is used to investigate a wide variety of conditions. It has several advantages over conventional imaging methods. One of the main advantages is that the procedure does not involve the use of ionising radiation (x-rays).

Your Scan

The procedure is totally painless. The only thing you will notice is the sound of the scanner—this is a fairly loud humming or knocking sound.

The scan may take up to 30-45 minutes but you will need to spend longer than this in the department. If you are very claustrophobic you are welcome to have a friend or relative stay with you throughout the procedure if you wish.

Occasionally it is necessary to enhance the scan by the use of a small injection into a vein in the arm or hand. There are few, or no, noticeable effects from the injection, and the product is very safe.

More Information

If you have any questions about your scan please feel free to ask the radiographer when you arrive at the unit. If you need to speak to someone prior to your visit please telephone 0151 529 5535 or 529 5560.

If you are taking medicine

Please continue to take any tablets or medicines prescribed by your doctor. You may eat and drink normally before your scan unless advised otherwise, but please avoid alcohol.

If you are asthmatic & use an inhaler

Please bring your inhaler with you.

If you have a heart pacemaker, surgical clip or replacement heart valve

If you have a heart pacemaker, surgical clips, or a replacement heart valve it may not be possible to perform this scan. Please telephone 0151 529 5535 for advice.

If you are pregnant

If you are, or might be pregnant it may not be possible to perform this scan. Please telephone 0151 529 5542 for advice.

After your scan

After you scan you will be able to return home. It will be quite safe for you to drive or return to work if you wish.

If you require an ambulance

If your doctor considers you require an ambulance please notify us immediately. Telephone 0151 529 5535 or 529 5560.

A) Metal in your eyes



Please phone—0151 529 5535 (MR Scanning Department) if you:-

Have ever had metal in your eyes or worked with metal at high speed (e.g. on a grinder or lathe) - if so, it may be necessary for you to have an x-ray of your eyes before the scan

B) Attendance outside of normal hours

If attending the Walton Centre for an MR Scan after 5pm or at the weekends, please enter via the door in the corner of the building to the left of the main entrance, signposted MR Scanning.

To enter, press the silver intercom button situated above the fire escape notice. A radiographer will then release the door lock.

Please take a seat in the waiting room, a member of staff will attend to you as soon as possible.

Author: Neuroradiology Department—March 2005

Reviewed: October 2008

Review Date: October 2010

©The Walton Centre for Neurology & Neurosurgery NHS Trust. All rights reserved. No reproduction by or for commercial organisations is allowed without the express written permission of the Walton Centre